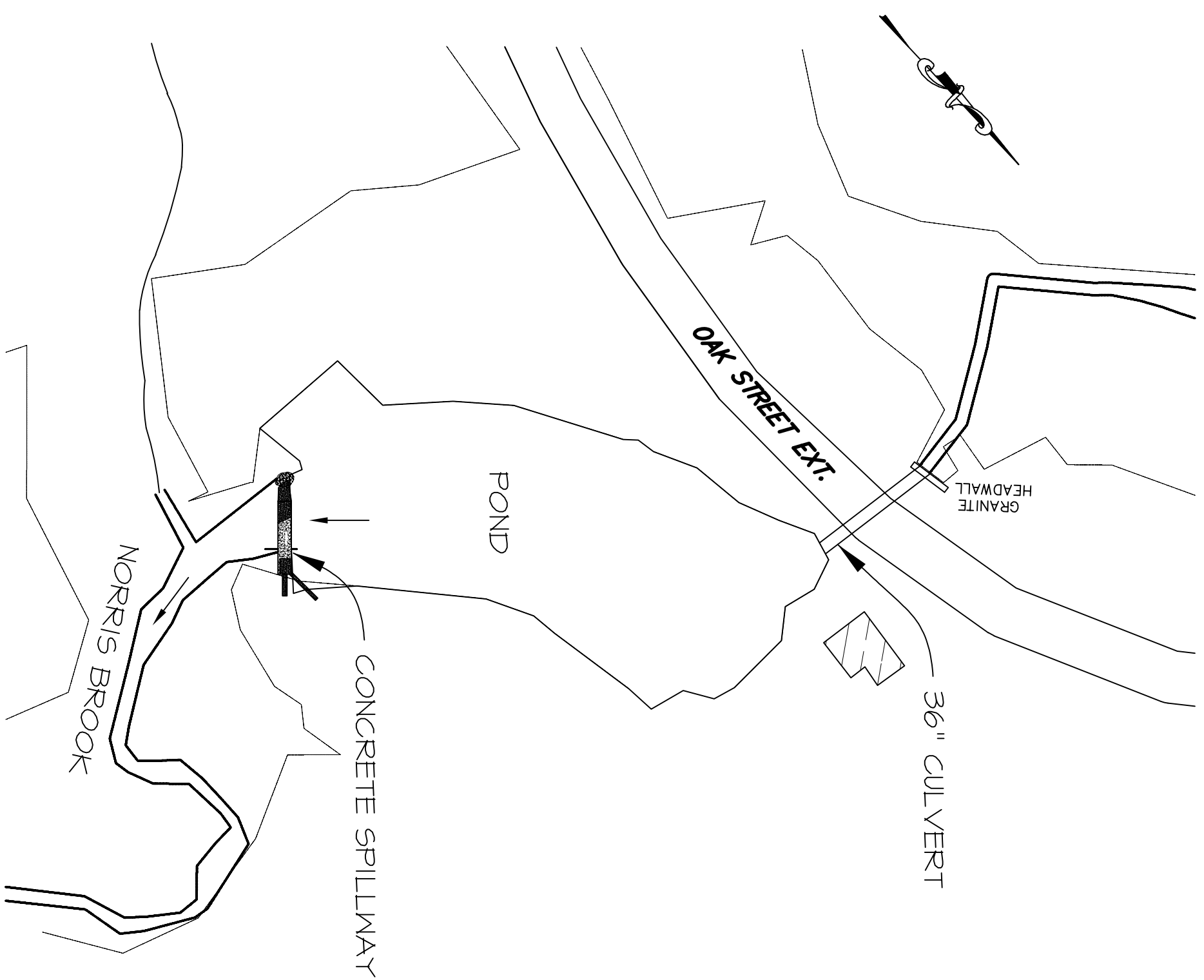
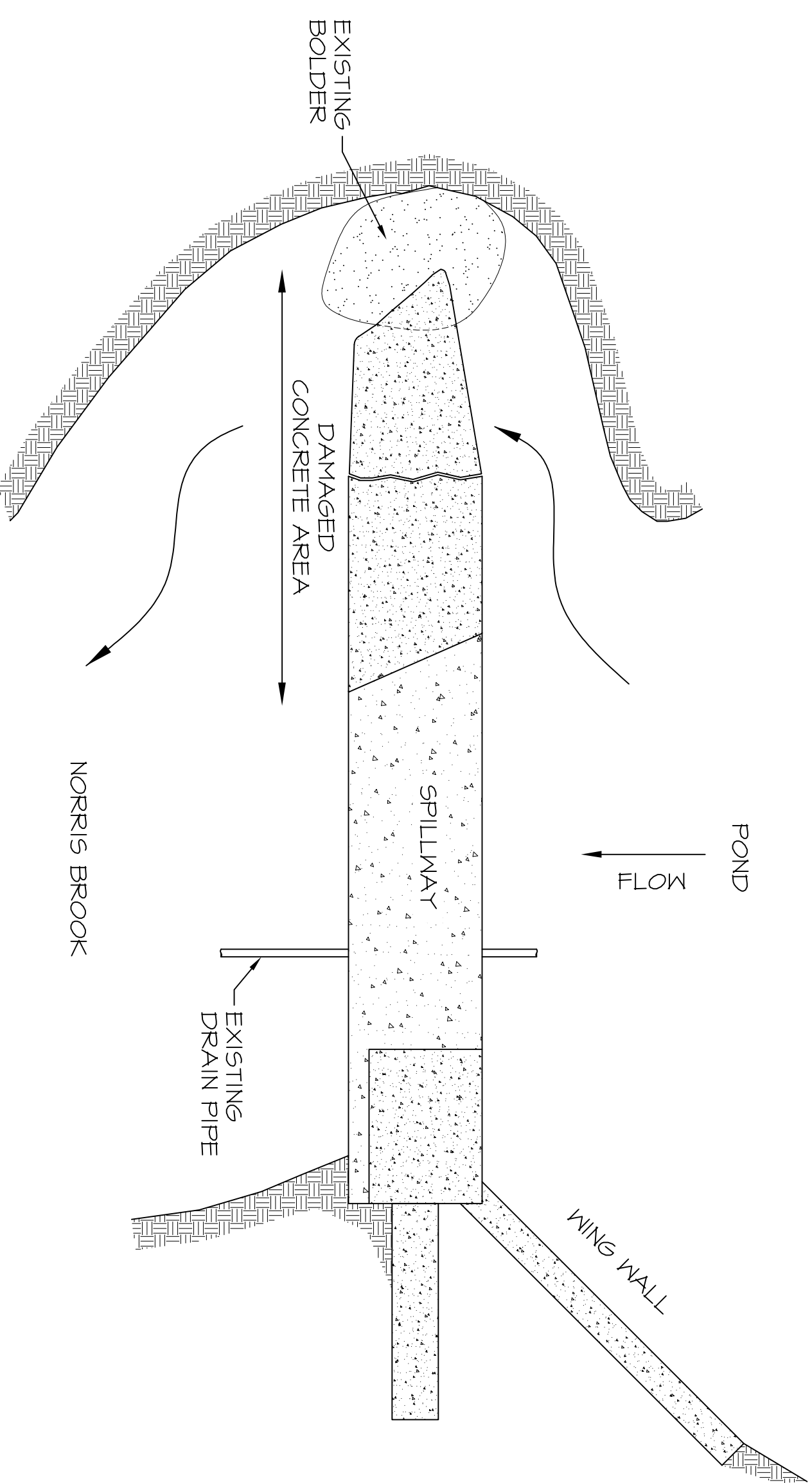


NOTES:

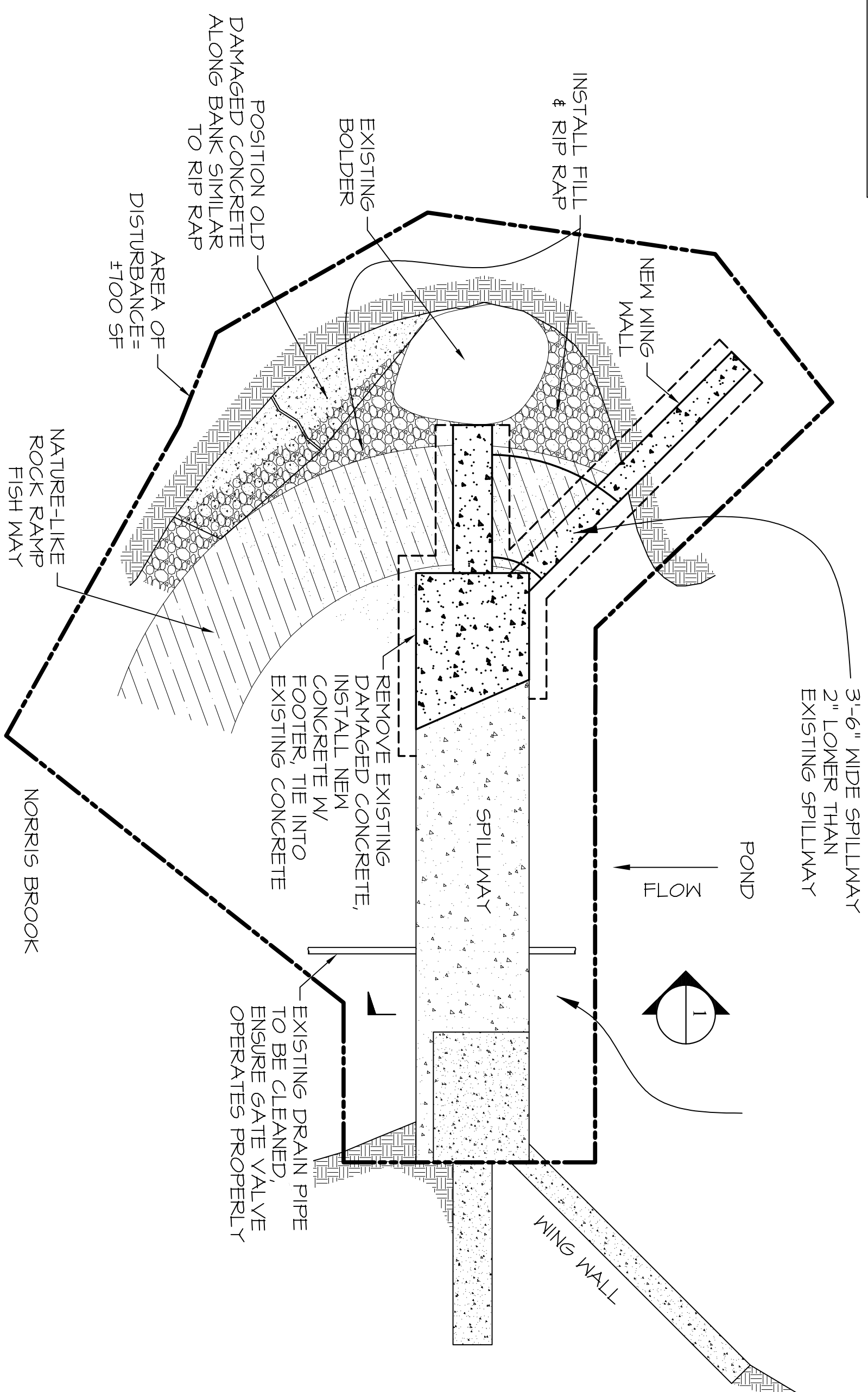
1. THE PURPOSE OF THIS PLAN IS TO DEPICT THE CONCRETE SPILLWAY CONCEPTUAL ALTERATIONS PROPOSED. PRIOR TO PERMIT SUBMITTAL, FINAL DETAIL SPECIFICATIONS WILL BE ADDED.
2. THE EXISTING CONCRETE SPILLWAY HAS BEEN IN PLACE FOR MANY DECADES AND WILL NEED RESTORATION TO PROVIDE CONTINUED SAFE SERVICE.



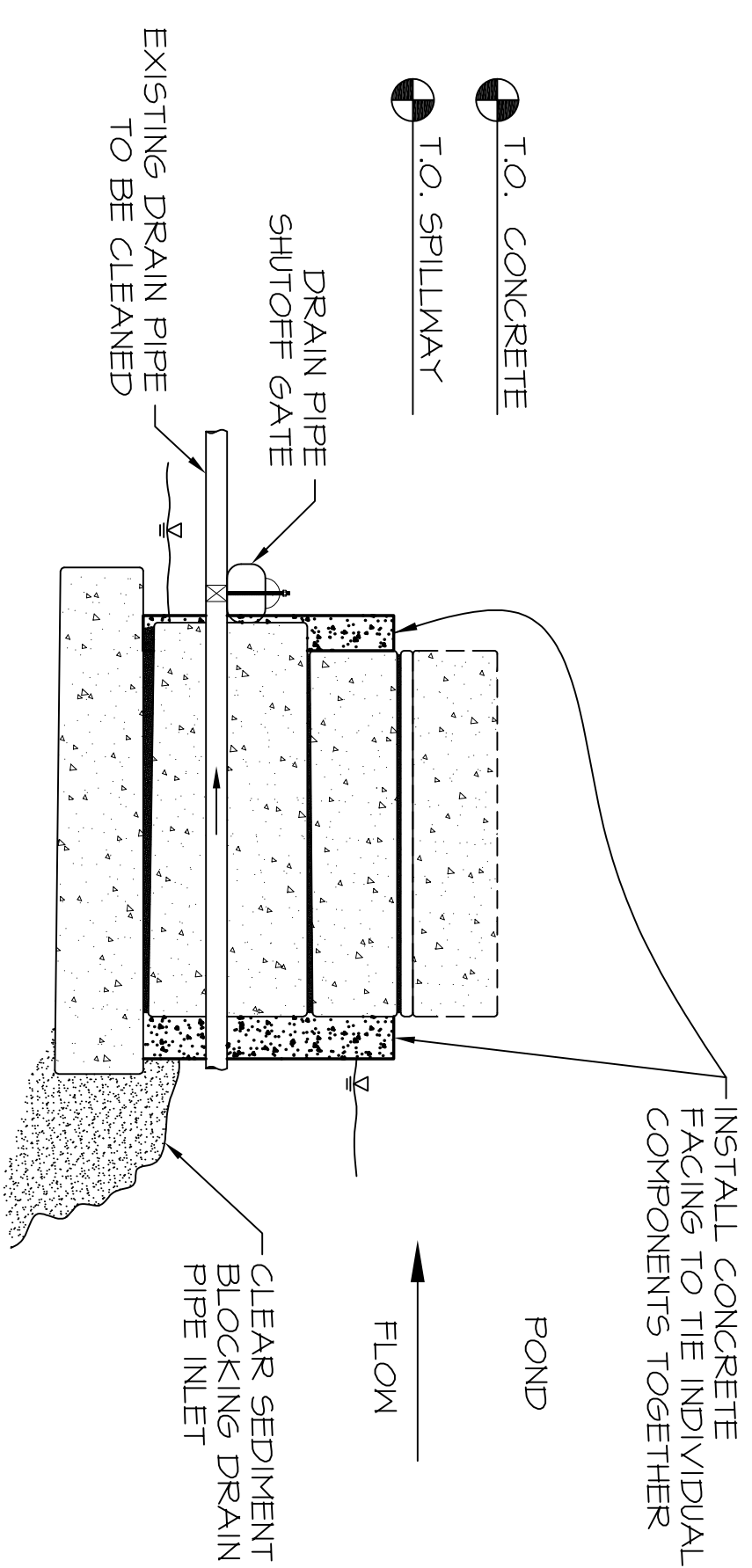
SITE PLAN
Scale: 1"=40'



EXISTING SPILLWAY
Scale: 1/4"=1'-0"



PROPOSED SPILLWAY
Scale: 1/4"=1'-0"



SECTION 1
Scale: 1/2"=1'-0"

REVISION HISTORY			
REV	DATE	DESCRIPTION	CHK
1	9/20/2018	FOR REVIEW	
2	10/2/2018	FOR REVIEW	
3	11/5/2018	FOR REVIEW	
4	11/13/2018	FOR REVIEW	

ROSS ENGINEERING
Civil/Structural Engineering & Surveying
909 Islington St.
Portsmouth, NH 03801
(603) 433-7560

**RESTORATION PLAN
CONCRETE SPILLWAY**
OAK STREET EXT.
NEW HAMPSHIRE

EXETER

PREPARED FOR:
EXETER ROSE FARM, LLC

DESIGNED BY:
ALG 9/9/2018
DRAFTED BY:
ALG 9/9/2018
CHECKED BY:
AR 9/20/2018

FOR REVIEW

JOB #: 18-046
SCALE: AS NOTED
SHEET: 1 OF 1
DRAWING:

S1